

STANDARD EQUIPMENT

ISO Standard cabin
 All-weather steel cab with 360° visibility
 Safety glass windows
 Rise-up type windshield wiper
 Sliding fold-in front window
 Sliding side window(LH)
 Lockable door
 Hot & cool box
 Storage compartment & Ashtray
 Cabin roof cover transparent
 Radio & USB player
 12 volt power outlet (24V DC to 12V DC converter)
 Handsfree mobile phone system with USB
 Sun visor
 Air-suspension seat with heater
 Cabin FOPS (ISO 10262 Level II)
 FOPS (Falling Object Protective Structure)
 Cabin lights
 Computer aided power optimization (New CAPO) system
 3-power mode, 2-work mode, User mode
 Auto deceleration & one-touch deceleration system
 Auto warm-up system
 Auto overheat prevention system
 Automatic climate control
 Full automatic temperature control
 Defroster
 Self-diagnostics system
 Starting Aid (air grid heater) for cold weather
 Centralized monitoring
 LCD display
 Engine speed or Trip meter/Accel.
 Clock
 Gauges
 Fuel level gauge
 Engine coolant temperature gauge
 Hyd. oil temperature gauge
 Warnings
 Check engine
 Overload
 Communication error
 Low battery
 Air cleaner clogging
 Indicators
 Max power
 Low speed/High speed
 Fuel warmer
 Auto idle
 Three outside rearview mirrors
 Fully adjustable suspension seat with seat belt
 Console box height adjust system
 Six front working lights, two rear lights
 Air horn
 Batteries (4 x 12V x 160 AH)
 Battery master switch
 Removable clean-out dust net for cooler
 Automatic swing brake
 Automatic fuel line deaeration
 Fuel pre-filter with fuel warmer
 Boom holding system
 Arm holding system
 Track shoes (700mm, 27.6")
 Full track rail guard
 Accumulator for lowering work equipment
 Electric transducer
 Lower frame under cover
 Travel alarm

OPTIONAL EQUIPMENT

Fuel filler pump (50 L/min)
 Beacon lamp
 Booms
 8.05m, 26' 5"
 8.2m, 26' 11"
 10.5m, 34' 5"
 11.3m, 37' 1"
 Arms
 3.4m, 11' 2"
 3.6m, 11' 8"
 6.5m, 21' 4"
 8.0m, 26' 3"
 Track shoes
 Double grouser shoe (800mm, 32")
 Double grouser shoe (900mm, 35")
 Pre-heating system, coolant (16kw)
 Tool kit
 Operator suit
 Rearview camera
 Seat
 Mechanical suspension seat
 Mechanical suspension seat with heater
 Air-suspension seat with heater
 Automatic lubrication
 Hi-mate (Remote Management System)
 Safety lock valve for boom cylinder
 Safety lock valve for arm cylinder
 Single- acting piping kit
 Double- acting piping kit
 Quick coupler
 Cabin roof-steel cover
 Heavy duty aircleaner

* Standard and optional equipment may vary. Contact your Hyundai dealer for more information. The machine may vary according to International standards.
 * The photos may include attachments and optional equipment that are not available in your area.
 * Materials and specifications are subject to change without advance notice.
 * All imperial measurements rounded off to the nearest pound or inch.

 **HYUNDAI CONSTRUCTION EQUIPMENT**

PLEASE CONTACT

www.hyundai-ce.com

2019. 12 Rev.7

MOVING YOU **FURTHER**

Robex
850LC-9
 With Tier 3 Engine installed



*Photo may include optional equipment

 **HYUNDAI**
 CONSTRUCTION EQUIPMENT

Pride at Work

Hyundai Construction Equipment strives to build state-of-the-art earthmoving equipment to give every operator maximum performance, more precision, versatile machine preferences, and proven quality. Take pride in your work with Hyundai!

Robex 850LC-9

Machine Walk-Around



*Photo may include optional equipment.

Engine Technology

Proven / reliable, fuel efficient Cummins Tier III QSX15 Engine.
Electronically controlled for optimum fuel to air ratio and clean, efficient combustion.
Low noise / Auto engine overheat feature / Anti-restart feature.

Hydraulic System Improvements

New patented hydraulic control for improved controllability / Improved control valve design for added efficiency and smoother operation / New auto boom and swing priority system for optimum speed / New auto power boost feature for additional power when needed / Improved arm-in and boom-down flow regeneration system for added speed and efficiency.
9 Series reduced fuel consumption by 4% compared with 7A series.

Pump Compartment

Industry-leading, powerful, reliable Kawasaki designed, variable volume in-line axial piston pumps.
New compact solenoid block equipped with 4 solenoid valves, 1 EPPR valves, 1 check valve accumulator and pilot filter - controls 2 speed travel, power boost, boom priority, safety lock.

Enhanced Operator Cab

Improved Visibility

Enlarged cab with improved visibility / See-through upper skylight for visibility and ventilation
Larger right-side glass, now one piece, for better right visibility.
Safety glass windows on all sides - less expensive than (polycarbonate) and won't scratch or fade.
Closeable sunshade for operator convenience / Reduced front window seam for improved operator view.

Improved Cab Construction

New steel tube construction for added operator safety, protection and durability.
New window open/close mechanism designed with cable and spring lift assist and single latch release.

Improved Suspension Seat / Console Assembly

Ergonomic joysticks with auxiliary control buttons for attachment use. Now with new sleek styling.
Heated suspension (standard) or optional air ride suspension with heat.
New joystick consoles - now adjustable in height by way of dial at bottom.
Adjustable arm rests - turn dial to raise or lower for optimum comfort.

Advanced 7" Color Cluster

New Color LCD Display with easy to read digital gauges for hydraulic oil temperature, water temperature and fuel. Simplified design makes adjustment and diagnostics easier.
Also, new enhanced features such as rear-view camera are integrated into monitor.
3 power modes : (P) Power, (S) Standard, (E) Economy, and (U) User mode for operator preference.
Enhanced self-diagnostic features with GPS download capability.
New anti-theft system with password capability.
Boom speed and arm regeneration are selectable through the monitor.
Auto power boost is now available - selectable (on/off) through the monitor.
Powerful air conditioning and heat with auto climate control, 20% more heat and air output than 7A series!

RMS

RMS (Remote Management System) works through GPS/satellite technology to ultimately provide better customer service and support.

Undercarriage

Sealed track chain (urethane seals) / Optional full track rail guard / Comfortable bolt-on steps.
Large upper roller cut-outs for debris clean-out / Tapered side frames for debris clean-out / Grease-type track tensioner.

Preference

Operating a 9 series is unique to every operator. Operators can fully customize their work environment and operating preferences to fit their individual needs.



*Photo may include optional equipment.

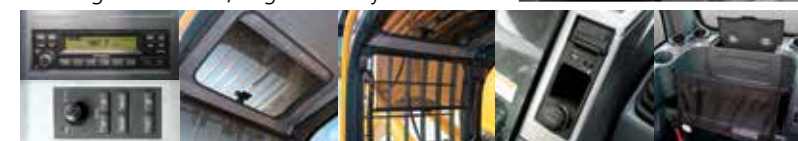


Wide Cabin with Excellent Visibility

The newly designed cabin was conceived for more space, a wider field of view and operator comfort. Single piece right side glass improves visibility and operator comfort. Plus, the front defrosting system provides more comfortable working condition. Special attention was given to a clear, open and convenient interior with plenty of visibility on the machine surroundings and the job at hand. This well balanced combination of precision aspects put the operator in the perfect position to work safely and securely.

Operator Comfort

In 9 series cabin you can easily adjust the seat, console and armrest settings to best suit your preferred comfort level. Other preference settings that add to overall operator comfort include the full automatic high capacity air conditioning system, transparent polycarbonate glass sun roof, large and easy to control sun visor, and radio / USB player.



Reduced Stress

Work is stressful enough. Your work environment should be stress free. Hyundai's 9 series provides improved cab amenities, additional space and a comfortable seat to minimize stress to the operator. The powerful climate control system and the optimized vent positions provide the operator with optimum air temperature. An advanced audio system with USB player, AM/FM stereo, plus remotely located controls is perfect for listening to music favorites. Operators can even talk on the phone with the hands-free cell phone feature.



Operator - Friendly Cluster

The advanced new cluster with 7 inch wide color LCD screen and toggle switch allows the operator to select his personal machine preferences. Power and work mode selection, self diagnostics, optional rear-view camera, maintenance check lists, start-up machine security, and video functions were integrated into the cluster to make the machine more versatile and the operator more productive.



Precision

Innovative hydraulic system technologies make the 9 series excavator fast, smooth and easy to control.



*Photo may include optional equipment.

Computer Aided Power

The engine horsepower and hydraulic horsepower together in unison through the advanced CAPO(Computer Aided Power Optimization) system, flow for the job at hand. Operator can set their own preferences for boom or swing priority, power mode selection and optional work tools at the touch of a button.

The CAPO system also provides complete self diagnostic features and digital gauges for important information like hydraulic oil temperature, water temperatures and fuel level. This system interfaces with multiple sensors placed throughout the hydraulic system as well as the electronically controlled engine to provide the optimum level of engine power and hydraulic flow.

Power Mode

P (Power Max) mode maximizes machine speed and power for mass production.
S (Standard) mode provides a reduced, fixed rpm for optimum performance and improved fuel economy. For maximum fuel savings and improved control, **E (Economy) mode** provides precise flow and engine power based on load demand. Three unique power modes provide the operator with custom power, speed and fuel economy.

User Mode

Some jobs require more precise machine settings. Using the versatile **U (User) mode**, the operator can customize engine speed, pump output, idle speed and other machine settings for the job at hand.

Improved Hydraulic System



To achieve optimum precision, Hyundai redesigned the hydraulic system to provide the operator with super fine touch and improved controllability. Improved pump flow control reduces flow when controls are not being used to minimize fuel consumption.

Improved spool valves in the control valve are engineered to provide more precise flow to each function with less effort.

Improved hydraulic valves, precision-designed variable volume piston pumps, fine-touch pilot controls, and enhanced travel functions make any operator running a 9 series look like a

smooth operator. Newly improved features include arm-in and boom-down flow regeneration, improved control valve technology and innovative auto boom and swing priority for optimal performance in any application.



Auto Boom-swing Priority

This smart function automatically and continuously looks the ideal hydraulic flow balance for the boom and swing motions of the machine. The advanced CAPO system monitors the hydraulic system and adjusts its settings to maximize performance and productivity.

Performance

9 series is designed for maximum performance to keep the operator working productively.

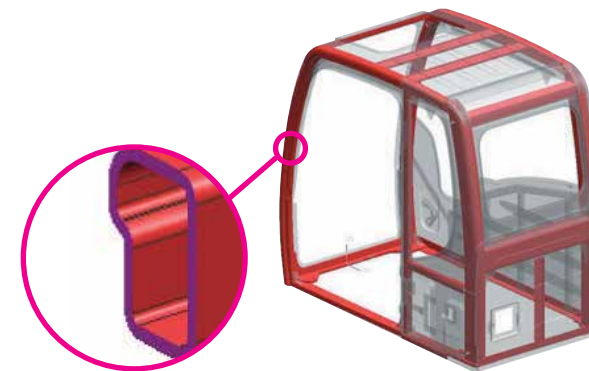


*Photo may include optional equipment.

Excellent Reliability and Durability

Durable track rail guards keep track links in place. Track adjustment is made easy with standard grease cylinder track adjusters and shock absorbing springs.

The strengthened undercarriage is designed for excellent production at quarries and mines. R850LC-9 is equipped with covers to protect the travel motors and hoses against damage from rocks.



Structure Strength

The 9 series cabin structure has been fitted with stronger but slimmer tubing for more safety and improved visibility. Low-stress, high strength steel is integrally welded to form a stronger, more durable upper and lower frame. Structural integrity was tested by way of FEM (Finite Elements Method) analysis and long-term durability tests.

CUMMINS QSX15 Engine

The six cylinders, turbocharged, 4 cycle, charger air cooled engine is built for power, reliability, economy and low emissions. This engine meets Tier III emissions regulations.

Heavy-duty strength

The QSX15 features dual overhead cams for superior performance. The first cam drives up to 30,000 psi (2,000 bar) of fuel injection for cleaner, more powerful combustion. The second cam operates the intake and exhaust valves, with a separate set of lobes specifically designed to operate the optional interbrake,™ capable of up to 400hp (298kW). Improved power cylinder components provide up to 40% longer life before cylinder wear out. A patented wastegated turbo with variable step settings delivers maximum performance without over boost at high speeds and increased airflow at lower speed for improved responsiveness.



Profitability

9 series is designed to maximize profitability through improved efficiencies, enhanced service features and longer life components.



Easy Access

Concentrated engine filters, remote type fuel pre-filter and fuel cut valve, and wide open compartments make service more convenient. The auto greasing system at the touch of a button provides simple and easy maintenance.



Hi-mate (Remote Management System)

Hi-mate, Hyundai's proprietary remote management system, provides operators and dealer service personnel access to vital service and diagnostic information on the machine from any computer with internet access. Users can pinpoint machine location using digital mapping and set machine work boundaries, reducing the need for multiple service calls. Hi-mate saves time and money for the owner and dealer by promoting preventative maintenance and reducing machine downtime.

Enhanced Safety

Variable cabin guards offers enhanced operator safety. And the work lamps on the cab improved operator convenience at night time. Wide cat-walks, large handrails and anti-slip plates provide easy access to the cab and safer maintenance.



Long-Life Components

9 series excavators were designed with bushings designed for long-life lube intervals (250hrs) & polymer shims (wear resistant, noise reducing), long-life hydraulic filters (1,000hrs), long-life hydraulic oil (5,000hrs), more efficient cooling systems and integrated preheating systems which extend service intervals, minimize operating costs and reduce machine down time.



*Photo may include optional equipment.